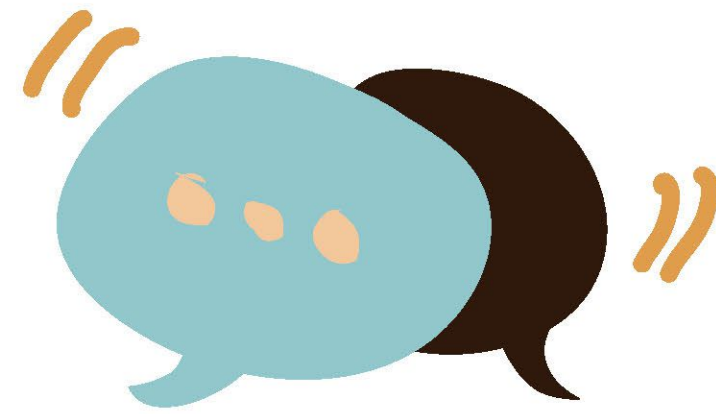




Strict protocols on use of face mask, social distancing, improved personal hygiene practices



Limiting number of persons per activity



Constant and effective communications and coordination



Assistance to enterprises amid COVID-business continuity planning, alternative livelihood

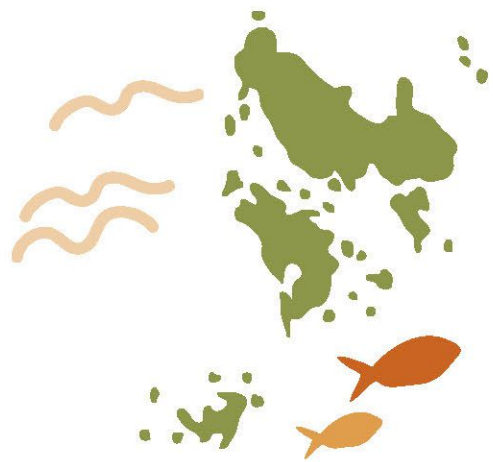


Shift to online tools/platform

# Adaptive Management Strategies

in the time of COVID-19





1

Strengthening and sustaining efforts in Calamianes



4

Organizing and strengthening of community organizations



2

Forest protection and rehabilitation activities in the mainland, especially on watersheds



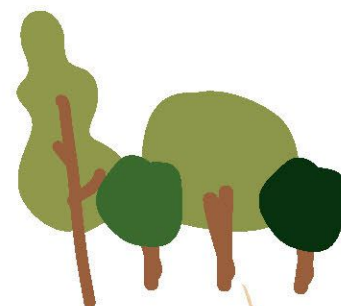
5

Landscape-wide advocacy campaign



3

Livelihood/ enterprise development



6

Projects leading towards establishment of legal and sustainable sources of wood



Continuation of forest conservation activities



# Key Activities, Accomplishments, and Impacts

## Assessments

Resource and risk assessment in Coron

Spatial Analyses in VAMR (Biophysical and Social)

Comprehensive biodiversity assessment in MMPL; New species recorded in MMPL

Baseline assessment of mangrove and beach forests in Coron and Busuanga

## Capacity-building

Training on GPS and tablets

Capacitated more 90 community educators on 3R, bantay gubat; Capacity-building on risk reduction and management

Five trainings conducted on coastal forest protection and monitoring

Mangrove learning visits

Trained in paralegal, community volunteers were deputized as coastal forest guards

# Key Lessons and Messages

**3R = RETENTION RECHARGE REUSE**

3R Approach: Retention, Recharge, and Reuse is an effective strategy to improve water supply and reduce impact of climate change in coastal and island communities



Training and involving the youth is important for sustainability

Recognizing IP rights and changing mindset of communities

Conduct of resource assessment and risk assessment are needed for community planning

IEC campaigns need to be maintained to further appreciate conservation efforts

Multi-stakeholder dialogue is important in conservation framework

Comprehensive biodiversity assessment is needed to understand better the species diversity, distribution pattern and vegetation structure of a landscape; This provides basis for planning and prioritizing conservation efforts

Involvement of youth and women

Sense of ownership is important to develop among community partners

## Planting and Protection

Established indigenous tree nurseries for each of 10 POs

Established three community nurseries for mangrove forest

Foot patrolling within CBFM areas

30 hectares reforested

Planted over 52,000 mangrove seedlings and 10,300 beach forests seedlings in rehabilitation sites

Organized 30 volunteer bantay gubat

15 mangrove and beach forests community nurseries were established in 8 community partners

Science-based, participatory assessments for improved and sustainable management of natural resources





# Key Activities, Accomplishments, and Impacts

## GROW Livelihoods Accomplishments (as of May, 2020)

● Assessments/baseline studies (livelihoods, socio-economic)	10 assessments
● Livelihood enterprises developed/catalyzed	6 unique products and 1 service supported (with 7 value-added products) Various capacity-building, capital support, linking/promotion/marketing, etc.
● Sustainable financing	2 mechanisms (PES and VSL)

## Sample developed livelihood products and activities

- Wildwood Tropical Forest Honey
- Brooke's Bounty VCO
- Brooke's Bounty Coco Vinegar
- Brooke's Bounty Coco Aminos
- Seked pandan handicrafts, vegetable production, agroforestry, & mangrove-related ecotourism
- Establishment of social enterprises
- Renovation of three herbal driers
- Renovation of processing plant
- Planted 33 hectares of abaca
- Establishment of irrigation systems and garden plots in selected farms

- Wild honey
- Rattan furniture

Increased revenues from social enterprise activities

# Key Lessons and Messages



Organizational capacity assessment and development is important to be conducted prior to conducting enterprise development activities



Developing entrepreneurial mindset among members of organizations is important for success and sustainability



Providing alternative source of income and establishment of sustainable farm system for food security is one of the key strategies in transforming the behavior of the communities



Coordination with barangay council provide more impact in establishing Local Conservation Areas



Now more than ever, coordination is important given the restrictions on mobility due to community quarantines



The FPIC process takes along time and it is important to work closely with the NCIP

# Sustainable livelihoods support for sustainable forest management



# Key Lessons and Messages

REDD+

Efforts to help communities prepare for REDD+ engagement include research, spatial analysis of land cover change, and coordination among various sectors



Forming collaborative knowledge groups at the grassroots level is important so that CBFM communities can strategically leverage their knowledge and learn from each others' good practices

As some CBFMAs will be expiring in a few years, there is a **need to assess the current CBFM program** by delving into current pressing issues, reviewing recent studies and synthesizing lessons learned from other ASEAN countries as basis for enhancing relevant policies and programs

INCLUSIVE GROWTH

IUCN's Natural Resource Governance Framework (NRGF) and Porter's Competitiveness Framework are tools that can be used to assess potential impacts of a policy intervention

# Resonating landscape work in National Policies and programs





# Key Lessons and Messages

Creative IEC approaches need to be sustained if we want to achieve behavior change



Mechanism for efficient gathering of evidence to IP, community complainants, and witnesses is crucial to be developed



Documenting and communicating traditional ecological knowledge and practices can help different sectors and can support communities' efforts to safeguard their lands and resources



Coordination with scientists and expert witnesses are important in the cases



utilizing scientific findings in legal and advocacy efforts



## Strengthening advocacy and

knowledge management platforms for sustained natural resources governance

Developing an online knowledge base is a huge step in biodiversity conservation as it promotes learning, further research, and collaboration work

